

# CARITAS CZECH REPUBLIC

## General Provider of Integration Services 2016



Caritas provided a total of **1,204 services** in various facilities and fields, including social care, social prevention, health care, hospice care or other types of services and assistance.



Local Caritas organizations registered more than **105,000 clients**, most often seniors, people with disabilities, children and youth, mothers in need and homeless people.



Caritas CR and (arch)diocesan or local Caritas organizations provided help in **34 counties**, mainly in the fields of humanitarian help, health care, social care and education. They also supported agriculture and development of civil society.



**Advisory centers for foreigners** in Blansko, Brno, České Budějovice (2x), Hradec Králové, Litoměřice, Plzeň and Prague provided specialized social and legal consulting for clients from Ukraine, Russia, Slovakia, Mongolia, Syria, Vietnam and other countries.



There were **7,464 employees** who worked in 345 Bohemian and Moravian Caritas organizations and their departments and facilities.



Caritas organizations in the Czech Republic worked with **59,374 volunteers** that donated a total of **390,744 hours of their free time**. Of this group, more than 52,000 participated in the Three Kings Collection.



The Three Kings Collection 2015 yielded a total of **89,373,094 CZK**, the highest proceeds during its 15-year history.



In total, departments of Caritas CR managed financial means of **3.2 billion CZK**.

# CCR abroad with focus on Migration



- Humanitarian aid and health care services, „Water for Homs project“ **in SYRIA**
- Material and food assistance **in IRAQ**
- Integration services for refugees **in JORDAN and PALESTINE**

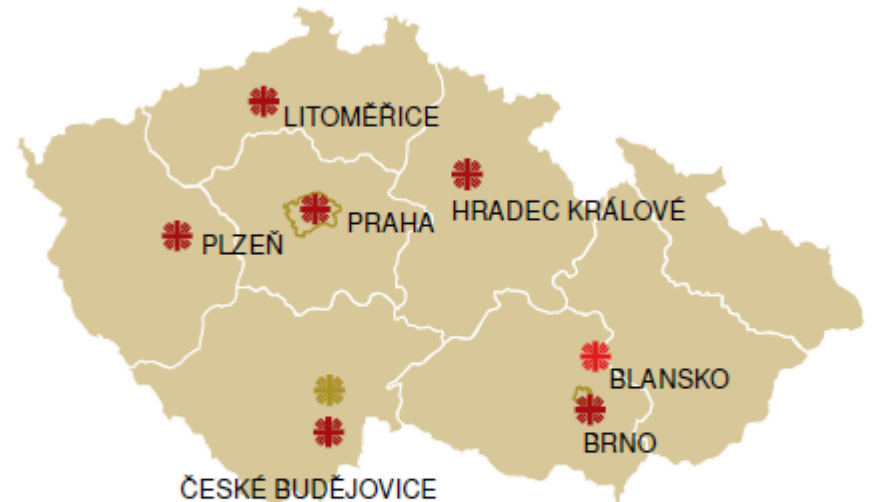





# CARITAS CZECH REPUBLIC AS GENERAL PROVIDER OF INTEGRATION SERVICES



- Working with migrants since 1992
- Nationwide reach through **8 Advisory Centres for Foreigners**
- CCR became GPIS officially on 1st January 2016
- **Real launch 3/2016**

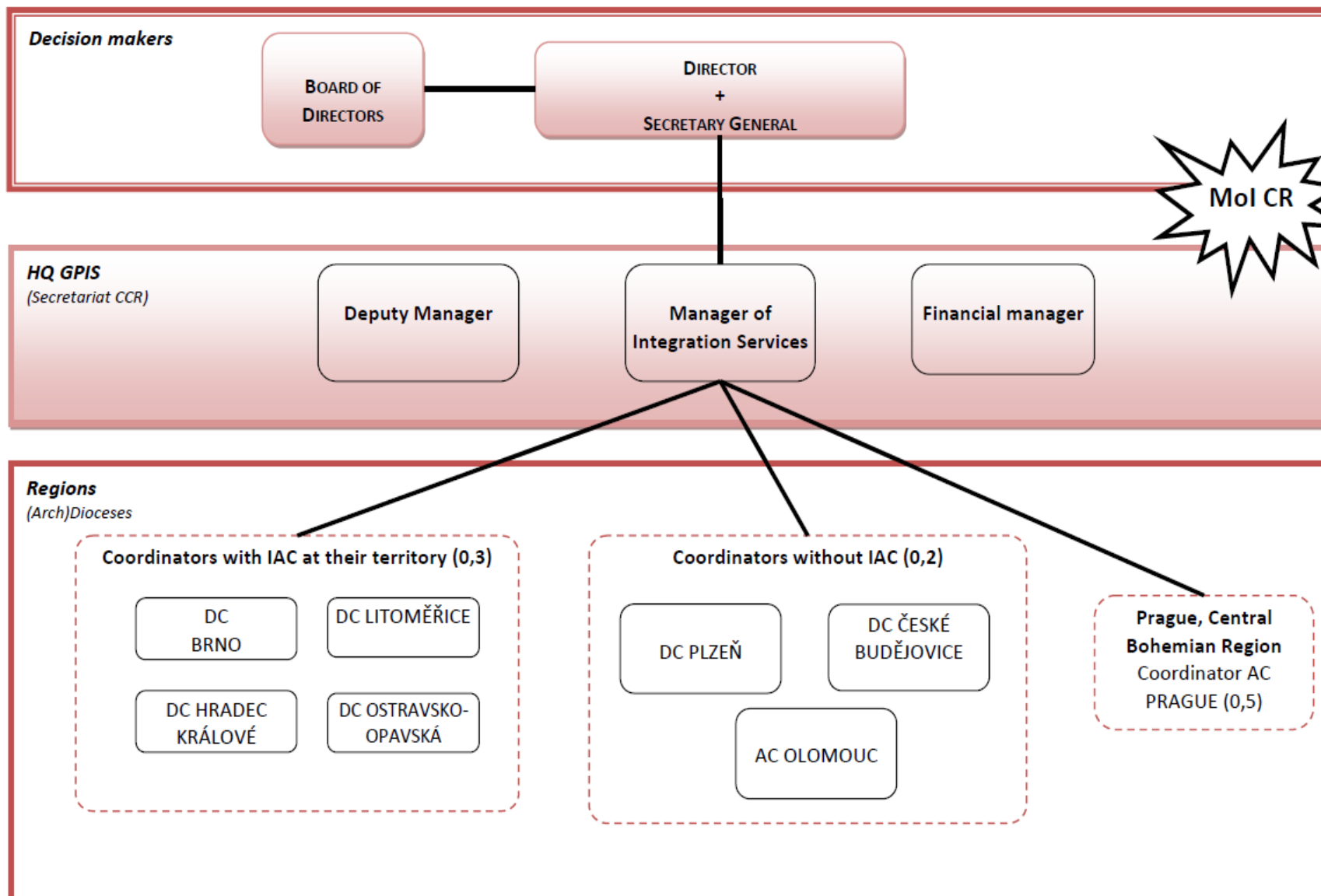
## Help for migrants and refugees



-  (arch)diocesan Caritas
-  Local Caritas organizations
-  Greek Orthodox Caritas

# GENERAL PROVIDER OF INTEGRATION SERVICES 2016 (SIP)

## CARITAS CZECH REPUBLIC



# A bit of Statistics

- Voluntary participation in SIP
- 11/2016 - 484 authorized persons, **428** actively participating
  - 209 women, 219 men
  - 98 families, 123 individuals
  - 90 asylum vs. 338 subsidiary protection
  - **346 persons at private flats** (maybe need to be moved to more suitable living) vs. **82 at Integration Asylum Centres** (temporary living, „1st Integration Phase“; **have to move**)



# More of Statistics



- Cca half of authorized persons are in Prague (**224** out of 428)
- **Top 5 countries of origin:** Syria (121), Ukraine (96), Iraq (50), Cuba (44), stateless (22)
- **21 sub-contractors** (suppliers of direct services)
  - Ranging from (e.g.) *Parish Caritas Beroun* with **1 integration plan** to *Counseling Centre for Integration* with **31 IPs for 56 persons**

# The Process



1. List of authorized persons (Refugees with MO granted in the Czech Rep. in 2015 and 2016)
2. 8 Coordinators contact APs
3. GPIS looks for suitable partner (sub-contractor) to connect with clients (individuals or families)
4. Sub-contractor's social worker builds up the Integration plan together with the client = **co-constructive approach**
5. Client signs the IP = **shared responsibility**
6. GPIS and Mol approval
7. Mid-term evaluation / reporting (after 6 months)
8. Final evaluation (after 12 months)

# Individual Integration Plan



## Integration Areas:

- Suitable housing
- Integration to Labour market (job + retraining)
- Education and overcoming the language barrier (ensured by Ministry of Education)
- Social assistance
- Health care services
- Interpretation, social and legal counseling

*Signature*



## Individuální integrační plán (dále jen „IP“)

poskytovatel (organizace)	Diecézní charita Brno
zpracoval/a (pracovník odpovědný za IP)	
datum zpracování IP	24.10.2016
počet oprávněných osob	1

### 1. Informace o všech členech rodiny

jméno, příjmení žadatele	
pohlaví	muž
datum narození	
státní příslušnost	Sýrie
jazyk řízení	angličtina
forma mezinárodní ochrany	doplňková ochrana
nabytí právní moci	20.9.2016
dobu trvání doplňkové ochrany	2 roky
adresa	, 638 00 Brno
telefon	
e-mail	
vzdělání	vysokoškolské
kvalifikace	výpočetní technika a informatika
pracovní zařazení	student

### 2. Popis situace klienta + odhad období poskytování IS

Klient pochází ze Sýrie, do ČR přišel v říjnu 2011, aby zde studoval informační technologie na VUT v Brně. V ČR nakonec požádal o mezinárodní ochranu. Jeho rodina žije nadále v Sýrii.

Poskytování integračních služeb je naplánováno na období jednoho roku.

### 3. Zajištění integračních služeb

#### Oblast bydlení

V současné době pán bydlí v bytě svého kamaráda. V listopadu by se měl stěhovat do bytu 1+1 v Brně na ulici. Klient již zaplatil kauci ve výši 8000 Kč a první a druhý nájem - každý ve výši 8000 Kč. Tyto náklady mu budou ohrzeny v rámci SIP (MV již předschválilo náklady na zajištění Klientova bydlení, ze kterého ale nakonec sešlo, proto je výše aktuálně požadovaných částek jiná). Byt je nevybavený, proto bude Klientovi zakoupen tento nábytek: postel včetně roštu a matrace 4000 Kč; 1 X ložní prádlo (deka, polštář, prostěradlo a povlečení) 1200 Kč; psací stůl 1 200 Kč; 4 X židle 2 000 Kč; televize 6 000 Kč; koberec 1x 1 000 Kč; sedací souprava 10 000 Kč; žehlička 500 Kč; nádobí, jídelní set 3 400 Kč; rychlovarná konvice 500 Kč; sušák na prádlo 1 000 Kč; botník 700 Kč; lampa 1 000 Kč; Montáž a doprava nábytku 2 000 Kč; vaňe 1 500 Kč; stolek do obývacího pokoje 1000 Kč.

Celková částka na bydlení dosáhne cca 37 900 Kč.



# Examples of IPs



- 8-member family from **Afghanistan**, moving from IAC to Brno (sub-contractor *DC Brno*)
- 2 cousins – university students from **Yemen** moving from IAC to Prague (cooperation of 2 sub-contractors – moving from region to region: *DC Hradec Králové + AC Prague*)
- Individual from **Syria**, 45 yrs, studied in the Czech Republic, now back in Prague searching for flat and work (sub-contractor *bfz – training academy*)

# First Reports

- Reports after 6 months of implementation of **34 IPs for 69 persons**
- Few of hard data ascertainable: „**What have sub-contractors provided so far**“

WHAT	NUMBER of recipients
BASIC FURNISHINGS	41
NEW LIVING	27
NEW JOB	10
REGISTRATION AT LABOUR OFFICE	23
OTHER SUPPORT BESIDES SIP (E. G. FOOD PACKAGES)	5



# Thank You for Your Attention



## Find more at:

- [www.charita.cz](http://www.charita.cz)
- [svet.charita.cz](http://svet.charita.cz)
- [migrace.charita.cz](http://migrace.charita.cz)
- State Integration Programme
  - [sip@charita.cz](mailto:sip@charita.cz)
  - [pavla.mullerova@charita.cz](mailto:pavla.mullerova@charita.cz)

